

INDEX

Viewpoint 1 - Existing View + Outline View
Viewpoint 1 - Montage View***

Viewpoint 2 - Existing View + Outline View
Viewpoint 2 - Montage View***

Viewpoint 3 - Existing View + Outline View
Viewpoint 3 - Montage View + Mitigated View

Viewpoint 4 - Existing View + Outline View
Viewpoint 4 - Montage View + Mitigated View

Viewpoint 5 - Existing View + Outline View
Viewpoint 5 - Montage View + Mitigated View

Viewpoint 6 - Existing View + Outline View**

Viewpoint 7 - Existing View + Outline View
Viewpoint 7 - Montage View + Mitigated View

Viewpoint 8 - Existing View + Outline View
Viewpoint 8 - Montage View + Mitigated View

Viewpoint 9 - Existing View + Outline View

Viewpoint 10 - Existing View + Outline View
Viewpoint 10 - Montage View + Mitigated View

Viewpoint 11 - Existing View + Outline View
Viewpoint 11 - Montage View***

Viewpoint 12 - Existing View + Outline View
Viewpoint 12 - Montage View + Mitigated View

Viewpoint 13 - Existing View*

Viewpoint 14 - Existing View + Outline View
Viewpoint 14 - Montage View***

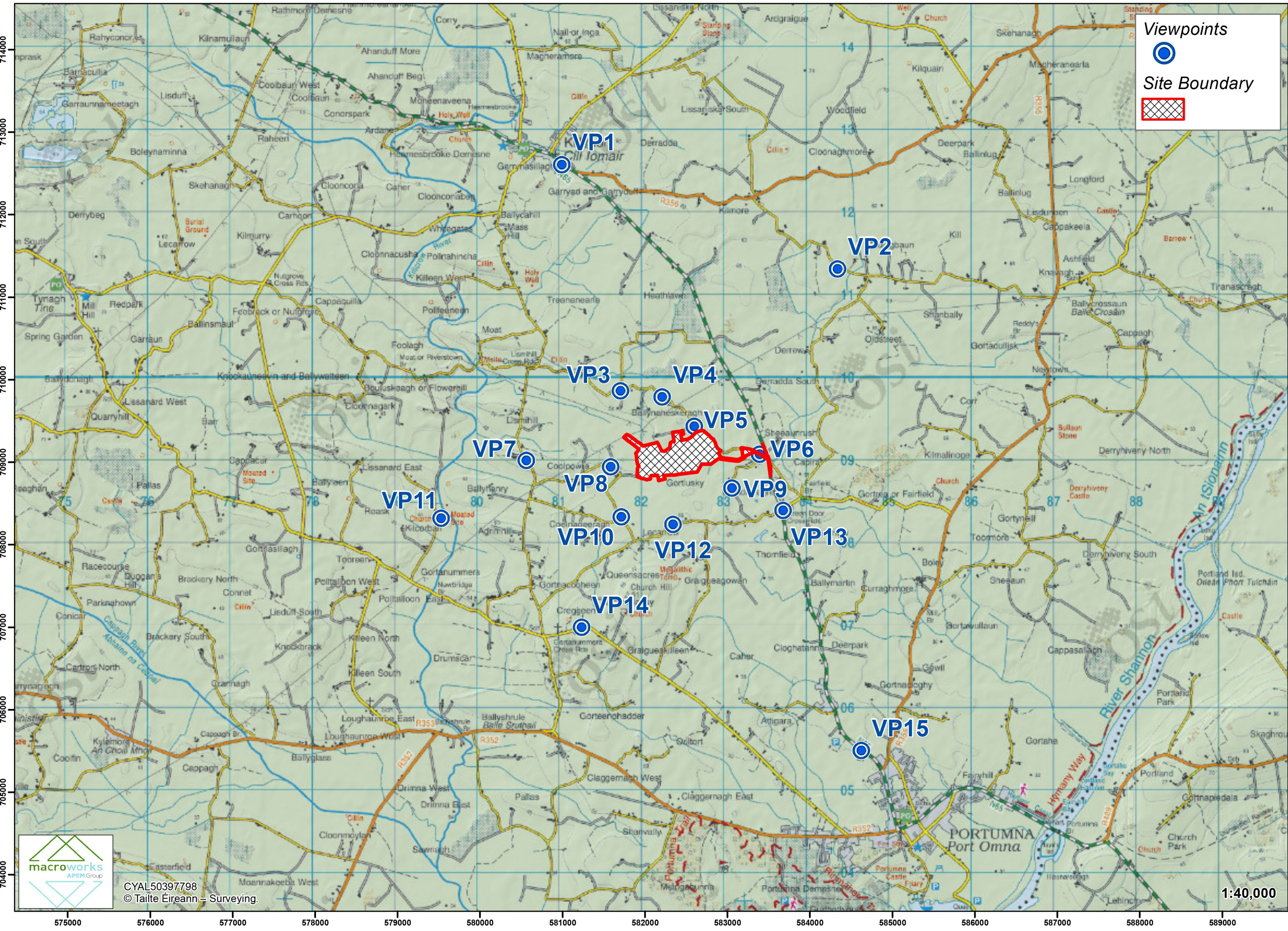
Viewpoint 15 - Existing View*

*NB - There is no Outline, Montage or Mitigated Montage View for this viewpoint as the proposed development is completely screened by terrain

**NB - There is no Montage or Mitigated Montage View for this viewpoint as the proposed development is completely screened by terrain and/or existing vegetation

**NB - There is no Mitigated Montage View for this viewpoint as the proposed mitigation is completely screened by terrain and/or existing vegetation

LVIA viewpoints selected for the Coolpowra project





These are 80° panoramic montages captured and presented in accordance with the guidance set by the British Landscape Institute 2011 - Advice Note 01/11.

To view these panoramas on a flat surface one must move from left to right along its length whilst maintaining a perpendicular viewing direction and the specified correct viewing distance of 30cm. To see this entire panoramic scene in reality would necessitate turning one's head through 40°.

Easting (ITM):	580990	Lens:	50mm / Full Frame Sensor	Date:	2024/05/09
Northing (ITM):	712608	Camera:	Canon 1-D Mark II digital SLR	Time:	14:03
Direction of View	162° E of Grid North	Camera Height:	1.7m Above Ground Level		
Angle of View:	80°				





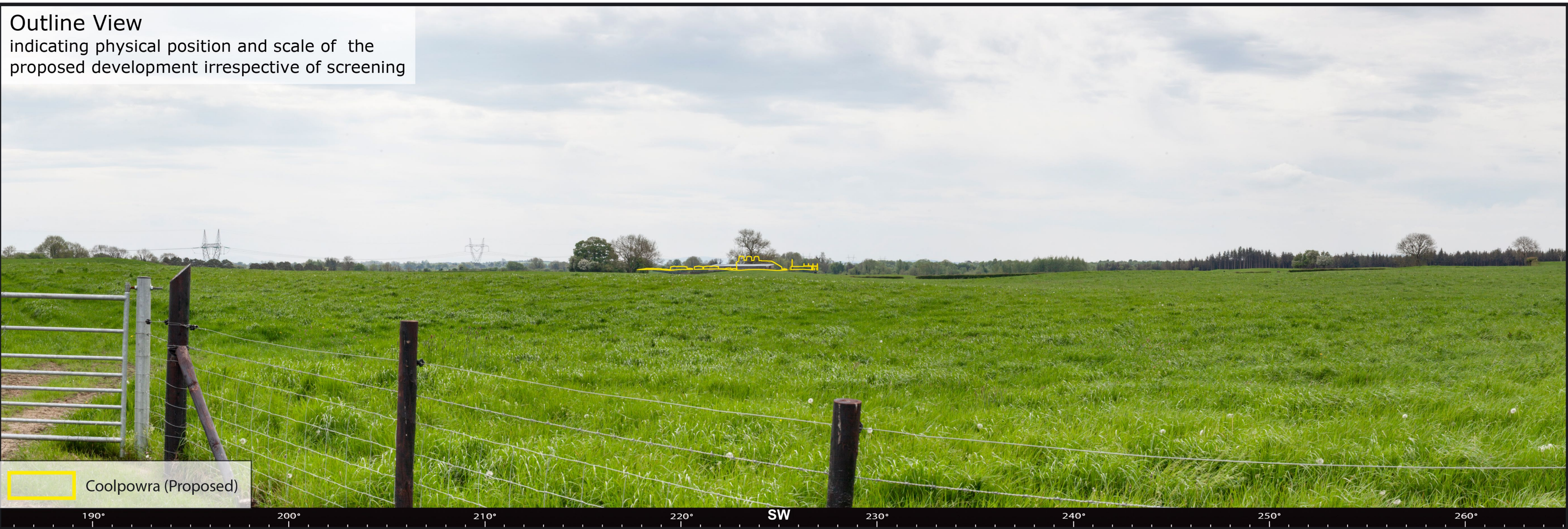
Please Note: There is no Mitigated Montage view for this viewpoint as the proposed mitigation is not visible from this viewpoint.

These are 80° panoramic montages captured and presented in accordance with the guidance set by the British Landscape Institute 2011 - Advice Note 01/11.

To view these panoramas on a flat surface one must move from left to right along its length whilst maintaining a perpendicular viewing direction and the specified correct viewing distance of 30cm. To see this entire panoramic scene in reality would necessitate turning one's head through 40°.

Easting (ITM):	580990	Lens:	50mm / Full Frame Sensor	Date:	2024/05/09
Northing (ITM):	712608	Camera:	Canon 1-D Mark II digital SLR	Time:	14:03
Direction of View	162° E of Grid North	Camera Height:	1.7m Above Ground Level		
Angle of View:	80°				





These are 80° panoramic montages captured and presented in accordance with the guidance set by the British Landscape Institute 2011 - Advice Note 01/11.

To view these panoramas on a flat surface one must move from left to right along its length whilst maintaining a perpendicular viewing direction and the specified correct viewing distance of 30cm. To see this entire panoramic scene in reality would necessitate turning one's head through 40°.

Easting (ITM):	584335	Lens:	50mm / Full Frame Sensor	Date:	2024/05/09
Northing (ITM):	711344	Camera:	Canon 1-D Mark II digital SLR	Time:	14:17
Direction of View	135° W of Grid North	Camera Height:	1.7m Above Ground Level		
Angle of View:	80°				

